



## WROCLAW RESEARCH CENTRE EIT+ LTD

---

Located at the Campus Pracze (an area of 27 hectares, 13 km away from the city centre with the unique German architecture built from 1899) donated by the City, whose leading role in the whole process was uniquely active and exemplary well beyond the region.

In a period of 2006-2007 the City Authorities, an academic community and representatives of the Wrocław business prepared the EIT+ regional strategy, which then became a backbone of the implementation programme co-financed mostly from the ERDF funds under the POIG. The preparation followed the programming rules of the then established the S<sup>3</sup> strategy and approach.

The heart of the program was creation of the **interdisciplinary research campus**, whose aim was to bridge academic and business stakeholders by offering dedicated space, highest class research infrastructure and research conditions in the areas of the highest concentration of talents, experience and the possibility of building regional business advantage.

### THE PROGRAM CONSISTED OF TWO MATCHING ELEMENTS:

a) **to build and to equip largest research and implementation infrastructure in Poland** financed mainly from SF (ERDF) – Project DCMiB value 502 mln PLN (UE contribution 85%), which implements one of the largest R&D investments in Poland and creates the network of more than 40 specialised laboratories for nanotechnology and biotechnology research, covering an area of about 23.5 thousand square meters.

b) **run two research programs:**

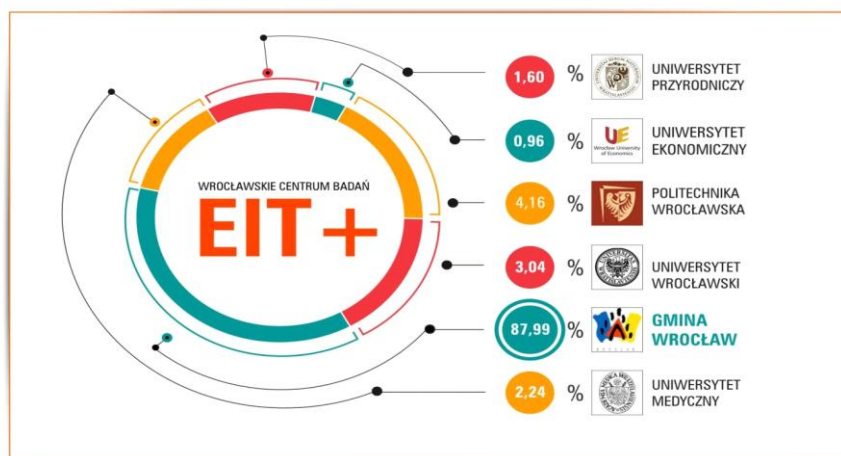
**BIOMED** - value 99 mln PLN (UE contribution 85%)

**NANOMAT** - value 108 mln PLN (UE contribution 85%)

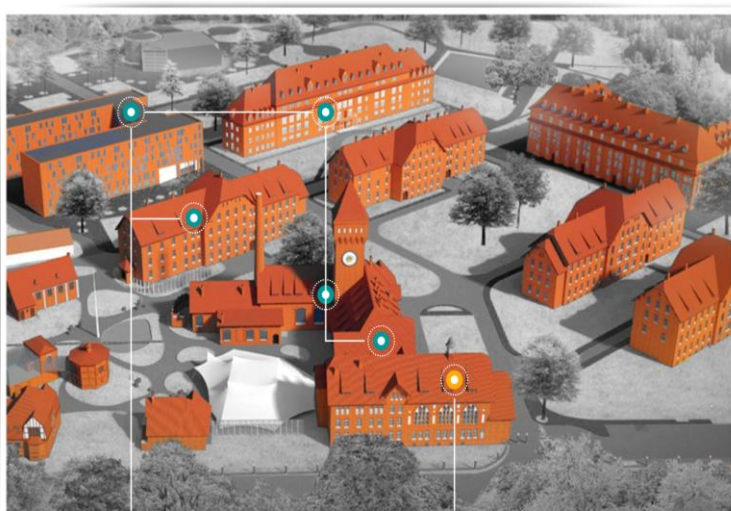
aimed at concentrating research potential in the two areas chosen as most perspective commercially and using at most the local research potential. Both programs have been run on a competitive basis and are being monitored by the ERC EIT+ as its agent and beneficiary.

Both segments form a single program entity run under the POIG programme.

To guarantee the business approach and accountability an Ltd. Company named Wrocław Research Centre EIT+ was created. Its current 6 shareholders are:



Total capital is 65,934 mln PLN.



BIO & NANO LABS | ADMINISTRATION | BIO & NANO LABS

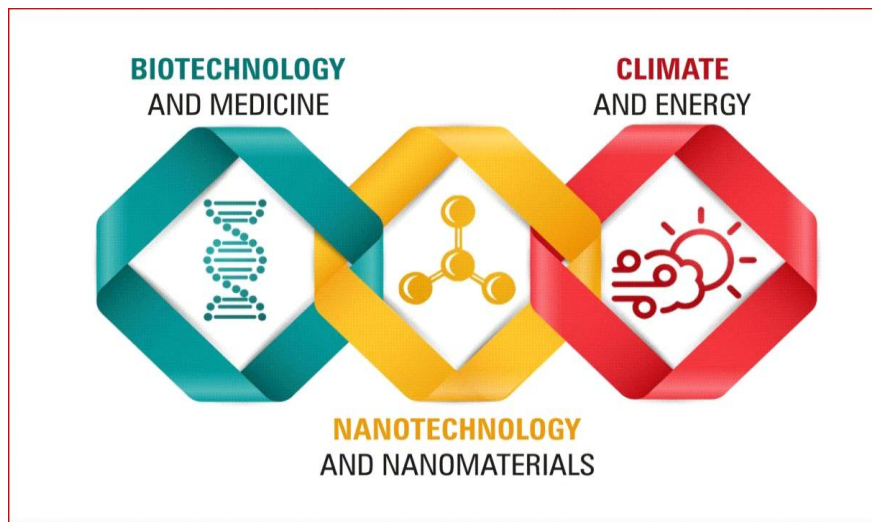
The research infrastructure consist of 4 dedicated research buildings (1 already fully operational, 2 being equipped and to be operational in 2015, 4<sup>th</sup> the construction stopped due to bankruptcy of the builder is being now completed by another company - interior will be finished until March 2015 and then furnished and equipped) and an administrative building (already operational). Total R&D space - about 23.5 thousand square meters. The unique highest world class R&D equipment will cost well over half of the allocated resources.

Researchers working there are recruited from the local talents and from abroad (returning grants). Currently about 280 people are working at the EIT+ site and we expect creation of about 350 jobs by the 2016 rising up to 600 in 2020.

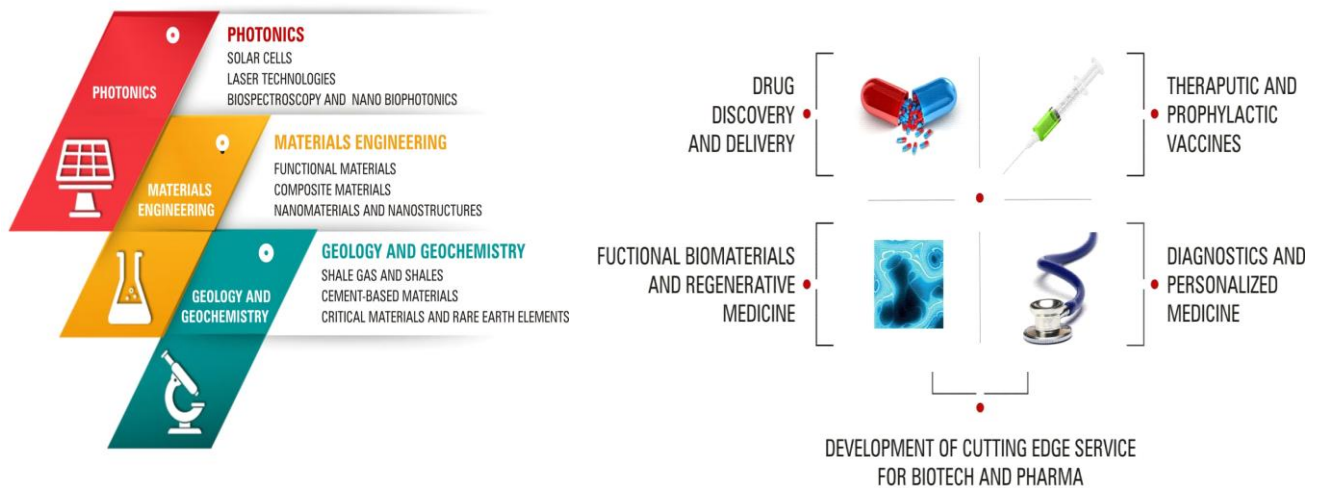
Total number of researchers involved in realising the two complementary research programs (BIOMED an NANOMAT) exceed 1000.

Currently the finished first part (mostly measurements and characterisation) operates providing superbly equipped research space for both universities and local industry and business. A whole investment of mostly technological character will be operational by the end of 2015.

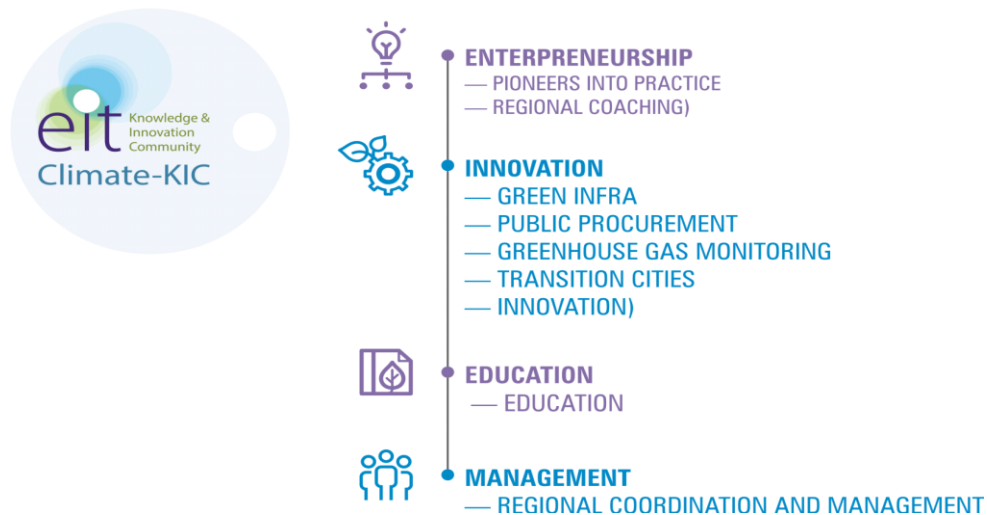
## THE RESEARCH AREAS:



Detailed specialisation in the Nanotechnologies and Biotech



The Regional Innovation Collocation Center of EIT Climate KIC is being operated by the WRC EIT+ at the campus Pracze.



## THE IMPACT ALREADY:

### NEW HIGH QUALITY JOBS

- 2014 Pracze campus – 270 employees
- Affiliated partners ( BIOMED and NANOMAT) – about 1000 researchers

**REVERSE BRAIN DRAIN** – already about 30 high level researchers already coming from abroad (mostly Polish)

**COMMERCIAL RESULTS** – 2014 we start selling to the local market, very rapid growth (mostly characterisation), active cooperation with ca 100 clients since January 2014 when first 10 laboratories were opened.

**STRATEGIC MATERIALS** – raw materials, shale gas

**PATENT APPLICATIONS** – already 3 patents granted and 46 patent pending from BIOMED and NANOMAT research programmes

**BUSINESS COOPERATION** – about 31 business partners (14 BIOMED, 17 NANOMAT)

**NEW STARUPS CREATED** - Fourteen based on new technologies spin-offs has been not only created but also sold on a market (two of them). Also a novel Academia2Business mechanism has been initiated to bridge the research and business communities. One of major tasks of the centre is the management of IPs created in the Centre and via type programs coordinated by the Centre.

The initiative of the creation of a LTD company instead of a standard technology transfer centre has been aimed at exploring a radically new avenue and path for the NMS. The main stakeholders are the academic institutions and the regional authorities with a State backup and support. Large local business becomes a partner in concrete actions run in a business way. Also the new campus becomes a hub for a joint actions as well as creation of a research and development space with the world class focused and dedicated modern research equipment. Interesting is the use of structural funds as enabler of the process itself.

### CONTACT PERSONS:

Prof Jerzy M Langer: [jerzy.langer@eitplus.pl](mailto:jerzy.langer@eitplus.pl) - President of WRC EIT+

Mr Tomasz Gondek: [tomasz.gondek@eitplus.pl](mailto:tomasz.gondek@eitplus.pl) - Vicepresident for business matters

<http://www.eitplus.pl>  
ul. Stabłowicka 147  
54-066 Wrocław, Poland  
phone: +48 71 720 16 01  
fax: +48 71 720 16 00  
email: [biuro@eitplus.pl](mailto:biuro@eitplus.pl)